



FiftyTwoNorth

BY MIAMI JEWISH HEALTH

Welcome to the Priority Club Member
Information Center Unveiling

August 20, 2025



192 Residences

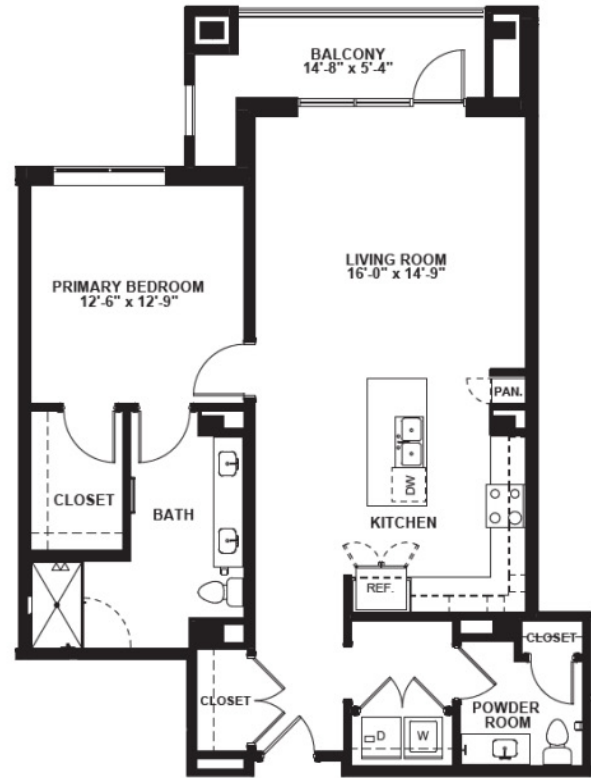
144 Tower apartments,
28 unique floor plans

48 Garden Home apartments,
3 unique floor plans



Meet the Monstera (Garden Home)

MONSTERA | 1,080 Square Feet | 1 Bedroom 1 ½ Bath | Garden Home

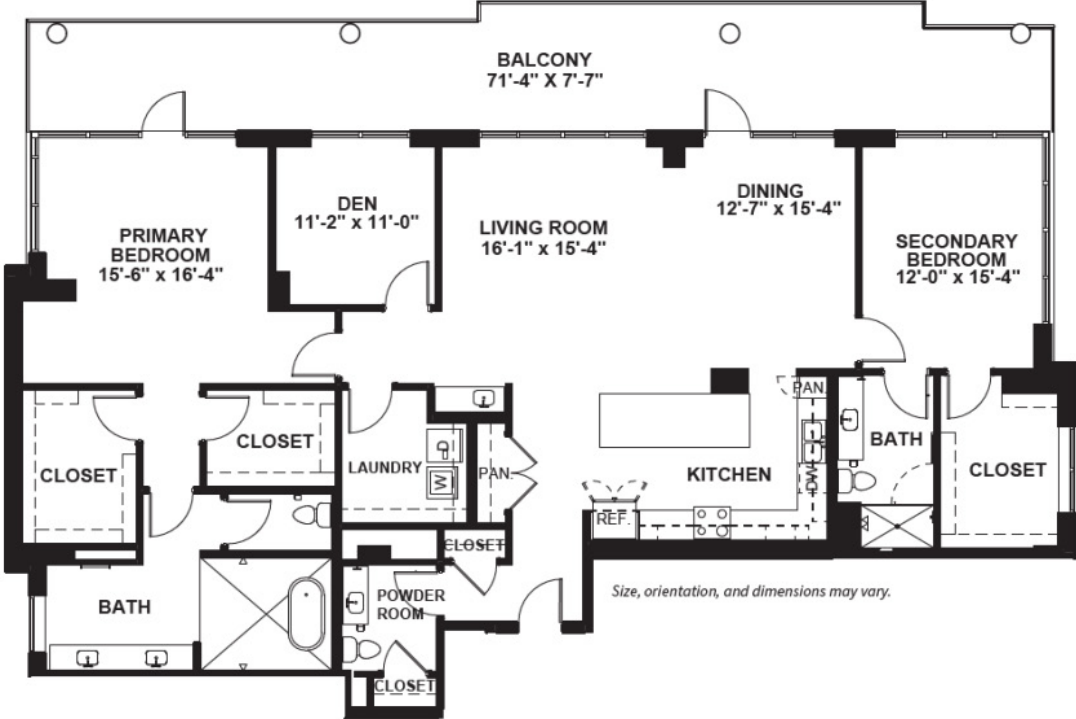


Size, orientation, and dimensions may vary.



Meet the Lotus (Tower)

LOTUS | 2,448 Square Feet | 2 Bedroom 2 ½ Bath with Den | Tower



What's Next? Your Appointment Will Include:

- Virtual tours of the community, residences, and even views!
- Review of floor plans, pricing, and contract options
- Ability to secure your favorite residence with a deposit equal to 10% of the entrance fee and a signed reservation agreement
- Secures best benefits and pricing
- Your 10% deposit is held in escrow with U.S. Bank and fully refundable with interest, should your plans change

Why Reserve a FiftyTwoNorth Residence Early?

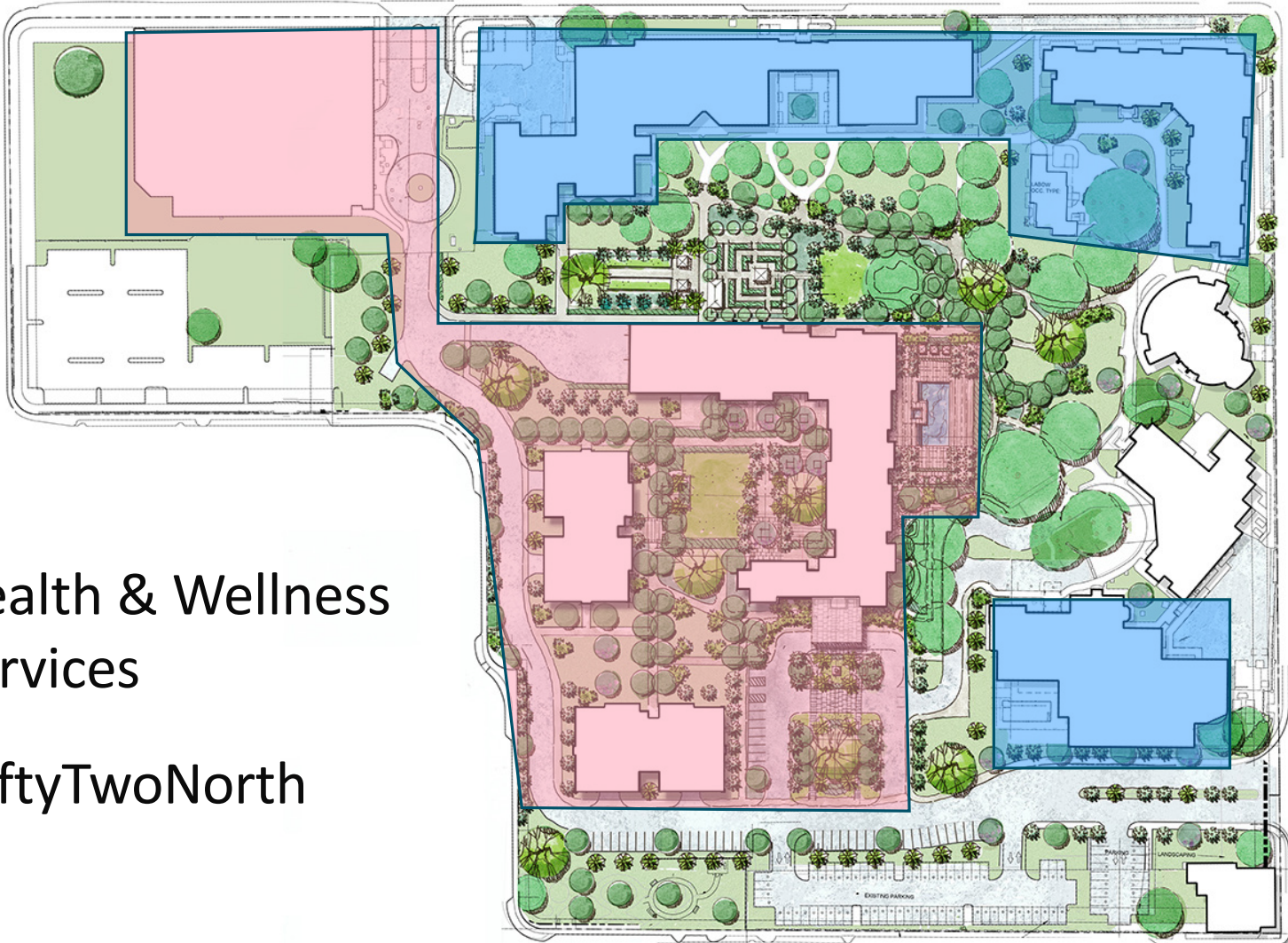
- Best **selection** of floor plan, location, view, and contract choice
- Lowest “early bird” entrance fees, **locking in a 10% discount** compared to opening year
- **5% higher refund of the entrance fee**, with 95% returned for singles and 85% returned for couples
- **Two months of complimentary** monthly service fees
- \$200 discount on second person monthly service fee **for life**
- \$2,000 monthly discount **per person for life** off future healthcare provided by Miami Jewish Health
- Ability to **personalize** your residence
- Complimentary garage parking
- Opportunities to learn community details and get acquainted with future neighbors through ongoing social and educational events



Health & Wellness
Services



FiftyTwoNorth



Thank you!



FiftyTwoNorth

BY MIAMI JEWISH HEALTH